



Delivering expertise and empowering
engineering performance for the
Biomedical Industry

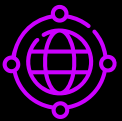
What Sets Us Apart

For over 25 years, ConsultNet has helped biomedical and medical device companies build high-performing engineering teams that drive innovation and keep critical projects on track. We understand the industry's unique regulatory, technical, and time-to-market pressures, especially amid evolving product demands and talent shortages.

That's why we deliver experienced professionals who integrate quickly, minimize downtime, and accelerate R&D and commercialization. Many of our clients go from **interview to hire in just 7 days.**



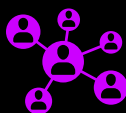
Highly skilled engineering experts for mission-critical initiatives.



Worldwide network of specialized recruiters to ensure rapid, scalable, and precise talent sourcing.



25+ years of proven success embedding advanced engineering + tech professionals into high-impact teams.



Onshore and nearshore teams, with access to top tech talent from our Mexico-based center at 40–60% lower cost than local rates.

Engineering Job Categories

- BIOMEDICAL
- R&D / ELECTRO-MECHANICAL DESIGN
- SOFTWARE / EMBEDDED SYSTEMS
- SYSTEMS
- TESTING / QUALITY
- MANUFACTURING / PROCESS
- DESIGN ASSURANCE / RELIABILITY
- REGULATORY + COMPLIANCE
- MATERIAL SCIENCE / CHEMICAL
- VERIFICATION + VALIDATION



CONSULTNET

SERVICES

Staff Augmentation
Direct Search
Onshore, Nearshore + Global
Consulting Services

ENGAGEMENT MODELS

Managed Services
Advisory Services
Talent Programs

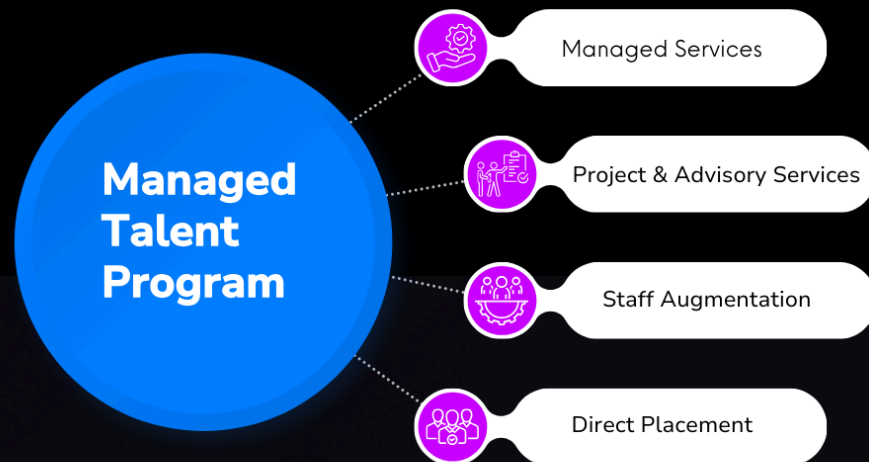
PARTNERSHIPS

Workday Services Partner
Salesforce Ridge Partner
AWS Service Partner

CORE TECHNOLOGIES

AI | Cloud + Data
Application Services
Infrastructure and Operations

BUILDING SKILLED TEAMS THROUGH OUR MANAGED TALENT PROGRAM (MTP)



MTP is a differentiated delivery model that combines the best attributes from the four traditional delivery models clients may utilize.

Our MTP enables clients to drive fast results through a scalable solution to build high quality, governed teams.

25+

years of success

98%

client
retention rate

5M

consultants
in network

45%

women leaders

CONSULTNET